

---




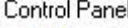


**SUBJECT: Internet Explorer 4.01 configuration****PLATFORM: Windows 95 & 98**

---

THE PARADISE.NET HELPDESK DOES NOT TECHNICALLY SUPPORT WINDOWS 95 AND WINDOWS NT OR APPLE MACINTOSH SYSTEMS LOWER THAN VERSION 8.0

*Please Note: This document assumes you have already created a Dial-Up Networking Dialler. If not then please call the Helpdesk on 0800 46 72 72, and ask for the fax-out **Setting up a Dial-Up Networking Dialler** (for your version of Windows).*

## Open Internet Explorer Properties

-  1. From the Desktop, double-click on the **My Computer** icon  

-  2. In the new window, double-click on **Control Panel**  

-  3. Finally, double-click on **Internet**  


You will be on the **Internet Properties** screen (General tab).

In the **Home page** field you can type any World Wide Web address you want to. It's not necessary to set the paradise.net homepage here (but you can if it suits). Internet Explorer will automatically be directed to this address every time you launch it. Alternatively, you can click **Use Blank** to open Internet Explorer but not actually connect to any websites at all.



### Recommended NZ sites:

- [www.nzzoom.com](http://www.nzzoom.com)
- [www.stuff.co.nz](http://www.stuff.co.nz)
- [www.press.co.nz](http://www.press.co.nz)
- [www.odt.co.nz](http://www.odt.co.nz)
- [www.nzherald.co.nz](http://www.nzherald.co.nz)

### Or use a search engine:

- [www.altavista.co.nz](http://www.altavista.co.nz)
- [www.google.co.nz](http://www.google.co.nz)
- [www.yahoo.co.nz](http://www.yahoo.co.nz)

---

## paradise.net Technical Assistance

Customers phone toll free: 0800 46 72 72  
Fax toll free: 0800 36 72 00  
E-mail: [help@paradise.net.nz](mailto:help@paradise.net.nz)  
Internet: [www.paradise.net.nz](http://www.paradise.net.nz)

Freepost: TelstraClear Limited  
Freepost 4768  
Private Bag 92143  
Auckland

**Disclaimer:** This information is provided on an "as-is" basis. This is all the information on this product that paradise.net Technical Assistance can provide. We take no responsibility for any difficulties or problems that may arise from the installation and/or use of this product.

At the top, click on the **Connections** tab

- Choose **Connect to the Internet using a modem**
- Ensure there is **NO TICK** in the proxy server option

On the right, click **Settings...**

Use the following Dial-Up Networking connection:

- Choose **paradise**

Number of times to attempt connection:

- **10** is a reasonable level

Number of seconds to wait between attempts:

- **60** seconds will comply with Telco rules

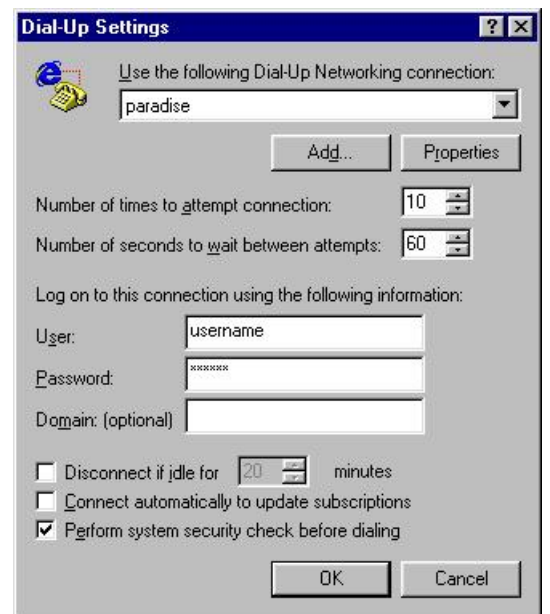
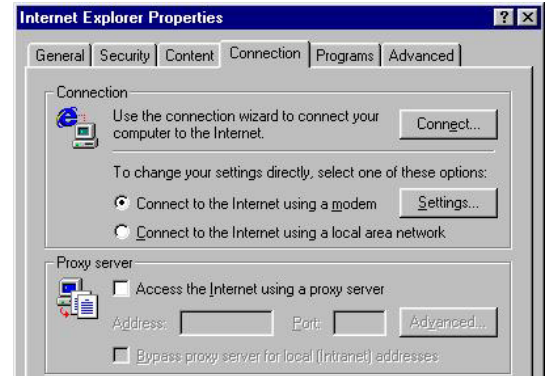
- **User:** Type your paradise username
- **Password:** Type your paradise password
- **Domain (optional):** Leave this blank

- **Disable** Disconnect if idle for...
- **Disable** Connect automatically...
- **Enable** Perform system security check...

Click **OK** (to close Settings) and **OK** once more to close Internet Explorer Properties. Now close the Control Panel window and you should be back on the Windows Desktop.

**Congratulations!**

That's it. You are now ready to start surfing the Internet with Internet Explorer. If you haven't already done so, you should configure **Outlook Express** to start sending and receiving your email.



## paradise.net Technical Assistance

Customers phone toll free: 0800 46 72 72  
Fax toll free: 0800 36 72 00  
E-mail: help@paradise.net.nz  
Internet: www.paradise.net.nz

Freepost: TelstraClear Limited  
Freepost 4768  
Private Bag 92143  
Auckland

**Disclaimer:** This information is provided on an "as-is" basis. This is all the information on this product that paradise.net Technical Assistance can provide. We take no responsibility for any difficulties or problems that may arise from the installation and/or use of this product.