

---

**SUBJECT: Internet Explorer 4.5 Configuration****PLATFORM: Windows 95 & 98**

---

THE PARADISE.NET HELPDESK DOES NOT TECHNICALLY SUPPORT WINDOWS 95 AND WINDOWS NT OR APPLE MACINTOSH SYSTEMS LOWER THAN VERSION 8.0

*Please Note: This document assumes you have already created a Dial-Up Networking Dialler. If not then please call the Helpdesk on 0800 46 72 72, and ask for the fax-out **Setting up a Dial-Up Networking Dialler** (for your version of Windows).*

## Open Internet Options



My Computer

1. From the Desktop, double-click on the **My Computer** icon



Control Panel

2. In the new window, double-click on **Control Panel**



Internet Options

3. Finally, double-click on **Internet Options**

You will be on the **Internet Properties** screen (General tab).

In the **Home page** field you can type any World Wide Web address you want to. It's not necessary to set the paradise.net homepage here (but you can if it suits). Internet Explorer will automatically be directed to this address every time you launch it. Alternatively, you can click **Use Blank** to open Internet Explorer but not actually connect to any websites at all.



### Recommended NZ sites:

- [www.nzzoom.com](http://www.nzzoom.com)
- [www.stuff.co.nz](http://www.stuff.co.nz)
- [www.press.co.nz](http://www.press.co.nz)
- [www.odt.co.nz](http://www.odt.co.nz)
- [www.nzherald.co.nz](http://www.nzherald.co.nz)

### Or use a search engine:

- [www.altavista.co.nz](http://www.altavista.co.nz)
- [www.google.co.nz](http://www.google.co.nz)
- [www.yahoo.co.nz](http://www.yahoo.co.nz)

---

## paradise.net Technical Assistance

**Customers phone toll free:** 0800 46 72 72  
**Fax toll free:** 0800 36 72 00  
**E-mail:** [help@paradise.net.nz](mailto:help@paradise.net.nz)  
**Internet:** [www.paradise.net.nz](http://www.paradise.net.nz)

**Freepost:** TelstraClear Limited  
Freepost 4768  
Private Bag 92143  
Auckland

**Disclaimer:** This information is provided on an "as-is" basis. This is all the information on this product that paradise.net Technical Assistance can provide. We take no responsibility for any difficulties or problems that may arise from the installation and/or use of this product.



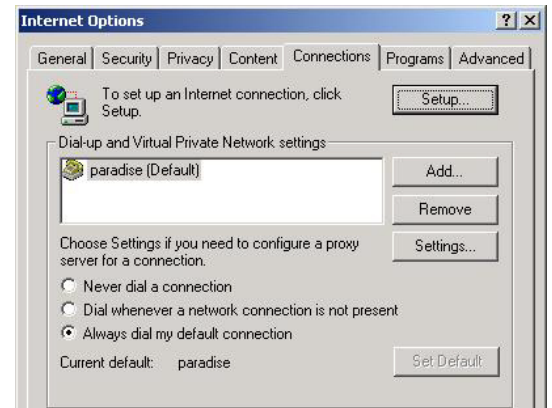
At the top, click on the **Connections** tab.

In the large (probably) white area, highlight **paradise**

Below the large white area there are 3 options:

- Select **Always dial my default connection**
- **Perform system security check...** should be ticked
- To the right, click the **Set default** button

The Dial-Up area should now display **paradise (Default)**

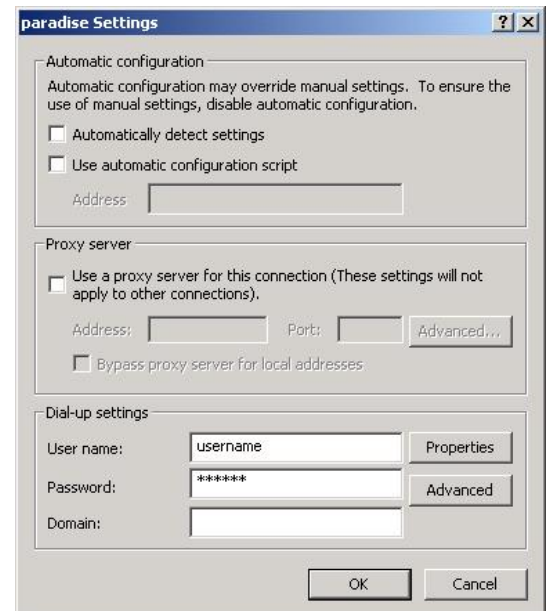
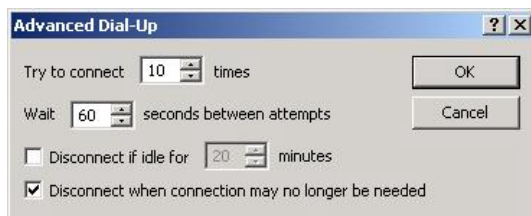


To the right of the Dial-Up area, click **Settings...**

- Remove any ticks you see
- **User name:** Type your paradise username
- **Password:** Type your paradise password
- **Domain:** Leave this field blank

Next to the Password field, click the **Advanced** button.

- **Try to connect** should be good on **10** times
- Set **Wait 60** seconds between attempts
- **DISABLE** the option **Disconnect if idle for**
- **ENABLE** the option **Disconnect when connection...**



Click **OK** (to close Advanced settings) then click **OK** again (to close Settings). To close Internet Properties click **OK** one more time and then close the Control Panel window. You should be back on the Windows Desktop.

**Congratulations!**

That's it. You are now ready to start surfing the Internet with Internet Explorer. If you haven't already done so, you should configure **Outlook Express** to start sending and receiving your email.

## paradise.net Technical Assistance

**Customers phone toll free:** 0800 46 72 72  
**Fax toll free:** 0800 36 72 00  
**E-mail:** help@paradise.net.nz  
**Internet:** www.paradise.net.nz

**Freepost:** TelstraClear Limited  
 Freepost 4768  
 Private Bag 92143  
 Auckland

**Disclaimer:** This information is provided on an "as-is" basis. This is all the information on this product that paradise.net Technical Assistance can provide. We take no responsibility for any difficulties or problems that may arise from the installation and/or use of this product.